

SD Ventsaver Plate Kit

For Screw-Down Corrugated Roofs



1 (800) 766-5291

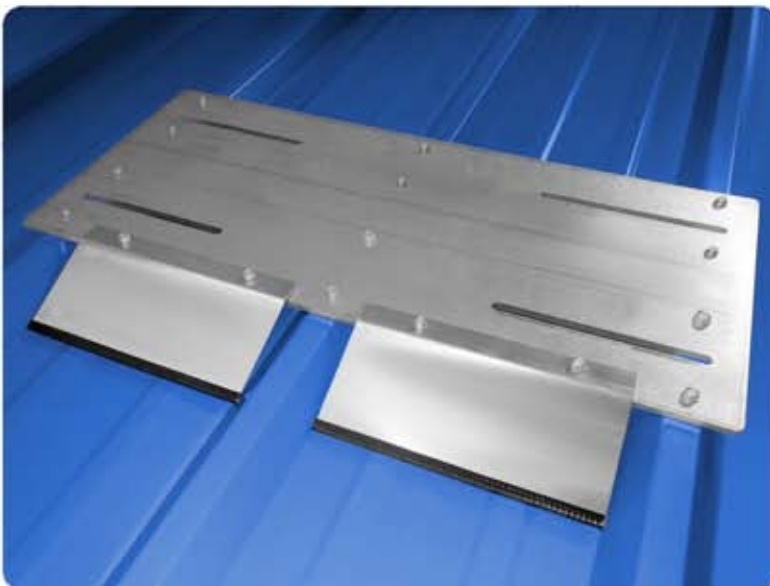
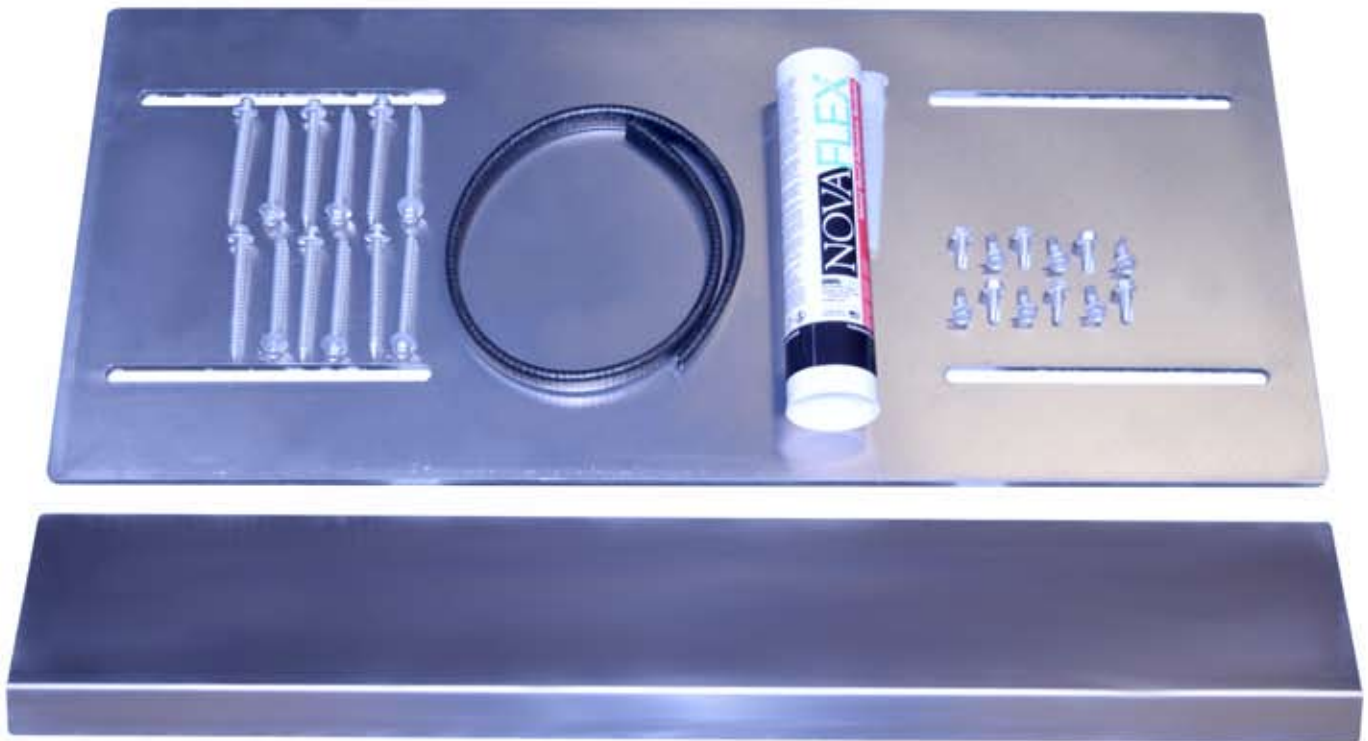
(717)737-4398

www.SNOBLOX-SNOJAX.com



For 9" & 12" R-Panels

12" x 27" x .25" Base Plate



The SD Ventsaver Plate Kit is an optional mounting plate kit that makes the Ventsaver EZ and HD products compatible with most screw down roof panels and pipe placement. (12) 1/4-14 x 3" roofing screws, with attached neoprene washers, secure the plate to the substrate below. Includes a tube of all-weather sealant for roof leak prevention at points of attachment. The SD Ventsaver utilizes a custom fit Ice Ramp to protect the base of the pipe from sliding snow and ice damage, while the fin of the Ventsaver protects the upper portions of the pipe. The all aluminum SD Ventsaver kit is manufactured in the USA.

- Non-corrosive components
- Made in the USA
- Compatible with most screw down roofs
- Allows adjustable mounting for most pipe locations

This kit includes:

- (1) 1/4" Adjustable Aluminum Plate
- (1) 1/8" aluminum Ice Ramp w/ edging strip
- (12) tek screws - 1/4" x 1" 3/8" hex head
- (12) 1/4-14 x 3" screws with neoprene washers
- (1) tube of all-weather sealant