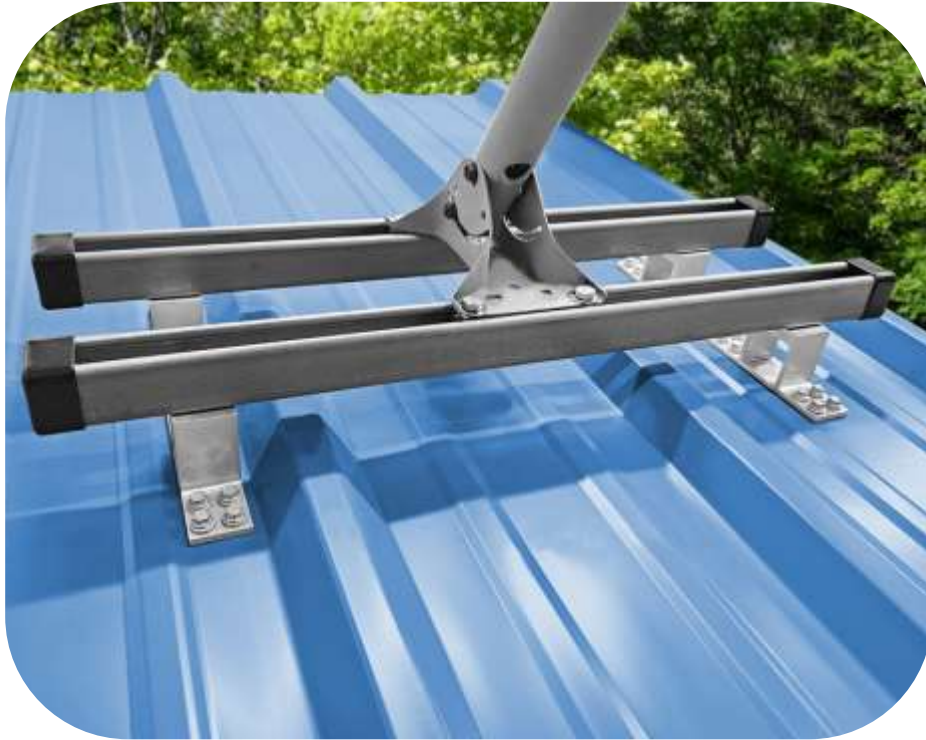


# SataMount MRM (Metal Roof Mount) For Exposed Fastener Roofs



## Table of Contents

Considerations .....	1
Attachment Method .....	2
Required Tools .....	2
Kit Contents.....	3
Attaching SataBracket to Unistrut.....	3
Attaching SataMount to Roof.....	4

## CONSIDERATIONS

**Important: The SataMount and satellite dishes are NOT designed to withstand isolated snow loads. The SataMount assembly should always be mounted within 3 feet of the peak of the roof or be protected by a snow retention system installed across the entire roof, mounted upslope from the SataMount.**

It is highly recommend to have at least 2 people on site for the installation of the SataMount Screw Down Mounting Bracket.

**Never mount the Screw Down MRM SataBracket on the high seams of a metal roof panel. Always mount in the flat portions of the panel into a solid substrate below to avoid roof leaks and ensure a positive attachment to the substrate. The substrate should be at least 1/2” plywood.**

## CHOOSING THE RIGHT SATAMOUNT FOR YOUR ROOF TYPE

### SataMount MRM (Metal Roof Mount) Is For Most Roofs That Can Accept Screw Mounting:

Most standing seam, concealed fastener, floating metal roofs can **NOT** accept screw fasteners and will require the **SataMount RCT** with roof clamps. These instructions are for mounting the **SataMount MRM** using the SataBracket on a roof system that can accept screw down mounting



SataMount MRM Metal Roof Mount

**VS.**



SataMount RCT Clamp For Standing Seam Metal Roofs

**\*Make sure all workers are properly harnessed and anchored to the roof according to OSHA fall protection guidelines.**



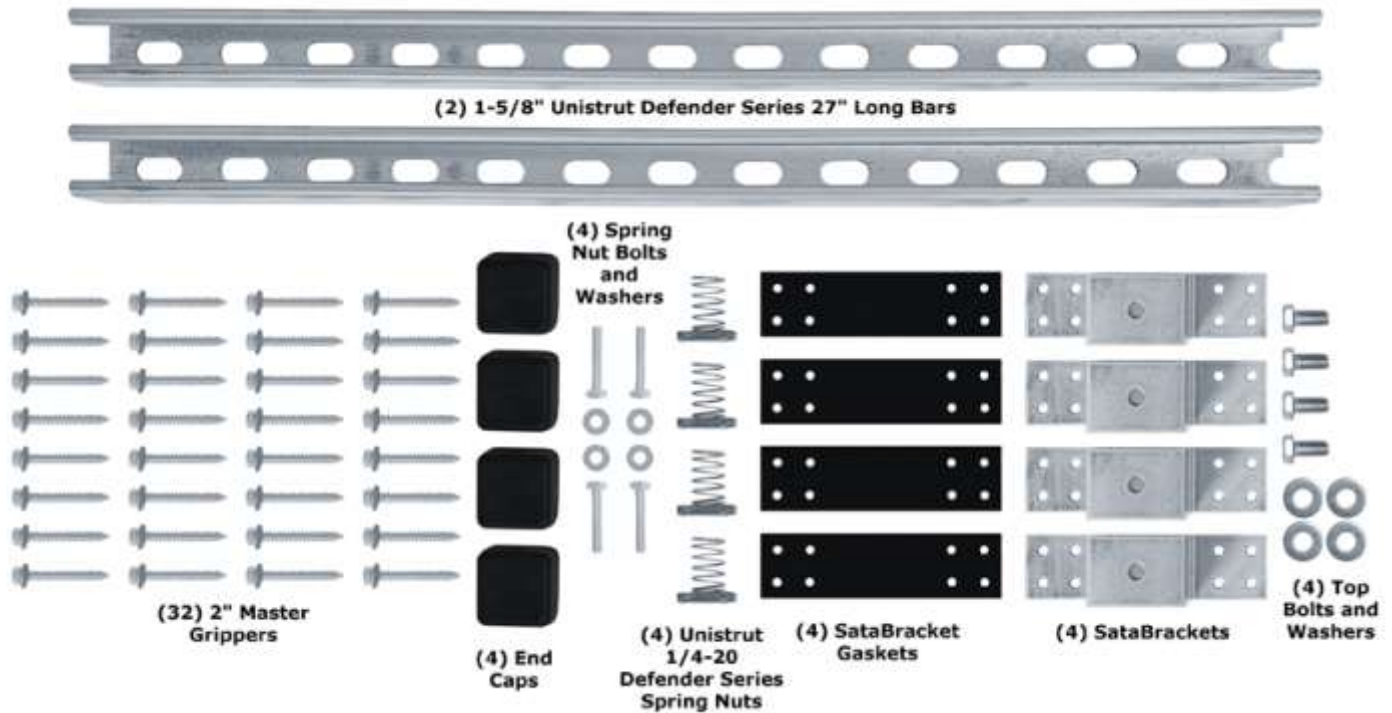
**\*NEVER use the SataMount MRM as a roof anchor tie-off point.**

### REQUIRED TOOLS

- Pencil or Sharpie to mark clamp locations
- Safety Goggles, Gloves and Fall Protection
- Screw Gun for installing Metal Roofing Screws
- Tape Measure
- 7/16" Socket for Spring Clips Bolts
- 3/8" Socket for SataBracket Roof Screws
- 9/16" Socket for SataBracket Top Bolts
- Torque wrench that reads inch pounds, **NOT** foot pounds.

## SataMount MRM (Metal Roof Mount) SataBracket Components

- (2) 27" SataMount Rails - Unistrut Defender Series Steel 100+ year service life finish, 12 ga. 1-5/8"
- (4) 1/4-20 Channel Nuts - Defender Series Finish
- (4) 1/4-20x1.5" Bolts - 304 Stainless Steel



## SataMount MRM Screw Down Satellite Mounting Bracket Instructions

1. Measure and pencil mark the roof panel flat areas where the screw-down SataBrackets will be installed to the Unistrut Rail. Make sure to use the panel flats that line up with the outermost slots on the Unistrut. Use that measurement to pencil mark both rails at all 4 SataBracket locations and install SataBrackets with the supplied top bolts and washers to each Unistrut rail slot at the pencil marks, leave top bolts loose. **Tip:** Be sure to place the SataBrackets far enough apart so the load is dispersed to the outermost ends of the Unistrut.





## SataMount MRM Satellite Mounting Bracket Instructions Continued

2. **Never mount** the SataBrackets **on the high seams** of an exposed fastener metal roof panel, this could eventually result in roof leaks as the roof expands and contracts. Set the **Upper Unistrut Rail** assembly within 3 feet of the roof peak. Install the SataBrackets (already installed to the Unistrut rail) in the panel flats using the pencil marks made from step 1. Check that the rail is level and straight and install the 8 Master Gripper screws through the SataBracket, into at least a 1/2" wood substrate. Make sure to only tighten the screws to allow 50% compression of the neoprene washer. Do **NOT** install **Lower Unistrut Rail** yet.



3. Attach the **base of the satellite mounting bracket (Not Included)** to the **Lower Unistrut Rail (not yet installed)** using the supplied channel nuts and bolts. The channel nuts are inserted, spring first, into the Unistrut and locked into place by twisting clockwise. Hold channel nut while threading bolt through your satellite mounting base into the threaded spring nuts. Only snug the spring nut bolts so final adjustment can be done later.



4. Set the **Lower Unistrut Rail** with the now attached satellite base bracket (not included). The loosely attached SataBrackets should be mounted in the same flats as the SataBrackets on the **Upper Unistrut Rail**. Use the included spring channel nuts to attached the satellite mounting base to the **Upper Unistrut Rail**, leaving the bolts loose for now. Install the 8 Master Gripper screws through each SataBracket, into at least a 1/2" wood substrate. Mount and tighten all the SataBracket top bolts to 90 inch pounds. Tighten the channel spring nut bolts holding the satellite base.

