

671 Willow Street
Lemoyne, PA 17043

Visit Us Online at
www.SnoBlox-Snojax.com

Phone: 717-737-4398
Phone: 1-800-SNOJAX1
Fax: 717-697-2452

SN BLOX JAX™



SNOJAX I

Invented in 1976, this is the very first patented polycarbonate snow guard. This snow guard can straddle a minor rib on popular 36" panels with 9" flats. This model is recommended for screw mounted applications only.

5.22" W x 3.25" H
Screw tested: 1,800 lbs.



SNOBLOX ACE

Waffled base increases bonding power. "V" shape fits most panels and does not trap water. A larger surface area bonds better and provides stronger holding power. This model requires a 3" wide flat mounting surface.

Face: 5" W x 3" H Base: 3" W x 5" L
Adhesive tested: 1,449 lbs. Screw tested: 4,849 lbs.



ICEJAX I

Also based on the proven SnoJax II design, this smaller guard features an interchangeable mounting base that can be flipped to accommodate popular 36" panels with 9" flats. Never undersold!

3" W x 2.5" H
Adhesive tested: 500 lbs. Screw tested: 4,200 lbs.



SNOJAX II

Introduced in 1985, SnoJax II is the first adhesive mounted polycarbonate snow guard. This unit features an interchangeable mounting base capable of straddling a small minor rib.

5.22" W x 3.25" H
Adhesive tested: 700 lbs. Screw tested: 3,750 lbs.



SNOBLOX DEUCE

The Deuce fits most metal roofing profiles, including popular 36" panels with 9" flats. These guards sit in the flat area between the minor ribs, eliminating rib straddling. This popular model only requires a 1.5" wide flat mounting surface. Available in clear and colors.

Face: 3" W x 2.5" H Base: 1.5" W x 4" L
Adhesive tested: 1,379 lbs. Screw tested: 3,456 lbs.



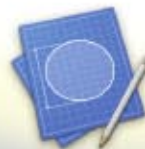
ICEJAX II

Based on the proven SnoJax II design, this guard features an interchangeable mounting base that can be flipped to straddle a small, minor rib. This model is the strongest, best bonding snow guard available!

5" W x 3" H
Adhesive tested: 1,561 lbs. Screw tested: 6,388 lbs.



Specification and
Product Cut Sheets
Available **Online** at
www.SnoBlox-Snojax.com



Get instant Snow
Guard Spacing at
SpacingTool.com



SNOWBREAKER

This revolutionary product helps minimize the dangers of sliding snow and ice on a roof by slicing it into small pieces so it can safely shed the panel. It can be attached with screws or can be adhesive mounted. SnowBreaker is also available with 3M "Peel and Stick" tape option for year-round installation.

Top: 2.75" H
Base: 1.75" W x 4" L



ECO-BLOX

Introducing the first-ever recycled snow guard made with post-consumer polycarbonate. This version of the trusted SnoBlox Deuce model is made with recycled water bottles and compact discs.

Face: 3" W x 2.5" H
Base: 1.5" W x 4" L



SNOBLOX DEUCE

Stock SnoBlox Deuce Colors:
Dark Bronze, Hunter Green, Dark Gray,
Black, Sandstone, Blue, Red, Copper,
Patina Green, Light Gray, White.

Face: 3" W x 2.5" H
Base: 1.5" W x 4" L



SLATEGUARD



The pre-assembled, sturdy stainless steel SlateGuard is an ideal retrofit solution for slate, asphalt shingle and composite tile roofs. Slots easily engage roof nails. This product is used with our popular clear or colored SnoBlox Deuce model.

Face: 3" W x 2.5" H Base: 1.5" W x 4" L
Strap: 1.75" W x 17.5" L

SN BLOX JAX™

671 Willow Street
Lemoyne, PA 17043

Visit Us Online at
www.SnoBlox-Snojax.com

Phone: 717-737-4398
Phone: 1-800-SNOJAX1
Fax: 717-697-2452

671 Willow Street
Lemoyne, PA 17043

Visit Us Online at
www.SnoBlox-Snojax.com

Phone: 717-737-4398
Phone: 1-800-SNOJAX1
Fax: 717-697-2452

SN BLOX JAX™



SureBond SB-190 Adhesive **SUREBOND**

Packaged in standard size 10.3 fl. oz. caulk tubes, this time proven adhesive bonds Snojax II, SnoBlox and IceJax to glossy coated Kynar® painted metals with unmatched strength. Time and temperature constraints apply. This product has an unmatched tensile strength of 2,000 lbs. with over 500% elongation.



MR150 NovaFlex Metal Roof Sealant **NOVAFLEX**

Packaged in standard size 10.3 fl. oz. caulk tubes, this fast curing, cold weather sealant is recommended as a snow guard sealant with the screw down method of attachment. It is water, mildew, and weather resistant. Neutral curing allows for use with galvanized, galvalume, and Kynar® finishes.



SNOW GUARD SCREWS

Master Gripper: #14, self-tapping screw that is 2" long with an attached neoprene washer for snow guard attachment to wood.

Master Driller: #14, self-drilling screw that is 1.5" long with an attached neoprene washer for snow guard attachment into steel purlins.

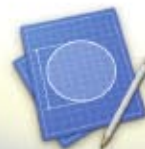


PANEL CLEANING WIPES

The 75 count container of large, alcohol panel prep wipes measuring 6" x 7" typically provides enough coverage for 300-500 snow guards. Used for cleaning and preparing panel surfaces for snow guard installations.



Specification and
Product Cut Sheets
Available **Online** at
www.SnoBlox-Snojax.com



Get instant Snow
Guard Spacing at
SpacingTool.com

**VentSaver
FB-151**



This ingenious new product adds support and strength to smaller vent pipes while the innovative fin design cuts through and assists in shedding snow and ice from the roof. VentSaver FB-151 series is made from non-corrosive, powder-coated aluminum with a pre-punched stainless steel strap to fit smaller sizes of pipe, from 1.5" to 4". Also provided are stainless steel nuts, bolts and heavy-duty 1 1/2" lag screws. It protects a standing profile of 6". Installation is quick and easy.



www.VentSaver.com

**VentSaver
P-383**



The American made VentSaver is the original vent pipe protector and the P-383 is especially designed for areas that are susceptible to heavy snow. This model is the larger of the two models and will fit a vent pipe or chimney from 1" to 14" in diameter. Made from aircraft quality aluminum and all stainless steel hardware, it is guaranteed to last a lifetime. The aluminum fin protects a standing profile of 9" and is powder coated gray. The kit also includes 1.5" heavy duty lag screws. This product is also great for gas vents and masts.



www.VentSaver.com

**VentSaver
HD**



This model has the largest fin of the three models. The VentSaver HD Series is made from non-corrosive, powder-coated aluminum and stainless steel aircraft cable. Stainless steel nuts, bolts and heavy duty 1 1/2" lag screws are provided for fastening to the roof. The HD Series will fit any roof pitch and an infinite array of sizes from 1" to 14" around. Designed to fit vents, chimneys or stack pipes that measure 1" - 14" across. Included is a snow diverter wing kit for panel valleys measuring 16" or wider. Wing kit spacers are provided to straddle minor ribs, if present in the panel. The use of the wing kit is optional and is not required.



www.VentSaver.com



LeafBlox can bend to accommodate any gutter shape or corner. Stiff LeafBlox bristles fill the gutter, keeping debris out while allowing water to easily flow through. Most leaves and large items will pass right over the LeafBlox. Most small debris caught near the top of the brush will blow away or decompose through natural weather cycles. Your gutters will continue to flow, preventing damage and keeping you off the roof! Different sizes are available for larger commercial gutters and standard residential applications. LeafBlox is virtually maintenance free and will not void roof warranty.

www.LeafBlox.com



**SNOBLOX
JAX™**

671 Willow Street
Lemoyne, PA 17043

Visit Us Online at
www.SnoBlox-Snojax.com

Phone: 717-737-4398
Phone: 1-800-SNOJAX1
Fax: 717-697-2452

671 Willow Street
Lemoyne, PA 17043

Visit Us Online at
www.SnoBlox-Snojax.com

Phone: 717-737-4398
Phone: 1-800-SNOJAX1
Fax: 717-697-2452

SN BLOX JAX™

SN BAR

SnoBar is a year round snow retention solution available in 16 ga. mill finish, stainless steel, or custom matched powder coating. Systems can be designed for most roof panels with top-loading, non-penetrating, stainless steel clamp-on attachment or aluminum screw down colorbrackets. Optional Ice Stoppers can be used to prevent snow and ice from sliding under the rail for maximum holding efficiency. Our SnoBar systems include a transferable limited lifetime warranty on performance, parts and finish.



SCOLORBAR

SColorBar is a year-round, extruded aluminum bar designed for maximum retention. ColorBar can be color-matched to your roof with 2" metal color strips, available from us in 36 standard colors, or using leftover roofing flat stock. ColorBar can also be powder-coated to match your roof's finish. Systems can be designed for most roof panels with top-loading, non-penetrating, clamp-on attachment or aluminum screw down colorbrackets. Optional Ice Stoppers can be used to prevent snow and ice from sliding under the rail for maximum holding efficiency.



WIND BAR

WindBar is the total solution for metal roof noise and wind uplift problems. This system acts as external metal purlins to prevent metal uplift and roof noise. WindBar's success is in the patented WindStopper. A non-penetrating stainless steel clamp is placed evenly on each standing seam with steel bar spanning between the clamps. WindStopper is mechanically attached to the bar over the center of the panel, pressing down on it and preventing uplifting under negative wind pressure.



Specification and
Product Cut Sheets
Available **Online** at
www.SnoBlox-Snojax.com



Get instant Snow
Guard Spacing at
SpacingTool.com



SnowCatcher

The SnowCatcher is a metal snow guard that resembles the popular SnoBlox and SnoJax models. It is made from 16 gauge 304 grade stainless steel and is available in a variety of powder coated colors. The large, forward mounted 2.5" H x 4" W face provides a generous holding field, and the 1.5" wide base fits most 36" panels with 9" flats. Professional test results show the SnowCatcher held up to 1,866 pounds. The durable, steel construction does not get brittle like cheap, fabricated cast guards. This guard includes a 1/16" thick adhered V742 CCF PVC foam sealer pad.



DECORATIVE SnowCatcher

Our Decorative Metal Snow Guards are based off the SnowCatcher model. The shapes currently available are Maple Leaf, Sun Burst, Fleur-de-lis and Mustang. These guards can also be manufactured in almost any shape, to suit a customer's needs. Each decorative guard is made from 304 grade stainless steel, and is available in mill or 50 TGIC Polyester powder coated colors. The large, forward-mounted 4.5" wide face provides a generous holding field, and the 1.9" wide base will fit most 36" panels with 9" flats. The professional test results show these snow guards hold up to 1,866 pounds. The durable construction does not get brittle like cheap, fabricated cast guards.



ROOFCLAMP

Attach Solar Panels, Satellite Dishes, Signs, Awnings, Roof Walks, Conduit, HVAC lines or just about anything else to a metal roof seam. The aluminum RoofClamp™ utilizes three stainless steel, cupped nose set screws that do not pierce or penetrate the panel; therefore, it will not void the roof manufacturer's warranty. The unique "cupped screw" technology has enormous strength advantages over slippery, bullet-nosed set screws and unbalanced two-pieced seam crimping devices. These two competitively priced models work on most standing seam panels. The RoofClamp™ is manufactured by Action Manufacturing, LLC. and exclusively marketed by IceBlox Inc. and Riddell & Co., Inc.



671 Willow Street
Lemoyne, PA 17043

Visit Us Online at
www.SnoBlox-SnojAx.com

Phone: 717-737-4398
Phone: 1-800-SNOJAX1
Fax: 717-697-2452

671 Willow Street
Lemoyne, PA 17043

Visit Us Online at
www.SnoBlox-Snojax.com

Phone: 717-737-4398
Phone: 1-800-SNOJAX1
Fax: 717-697-2452

SN BLOX JAX™



SNOBLOX DEUCE

The Deuce can be adhesive or mechanically fastened and requires a 1.5" flat mounting area. It will fit most popular 36" panels with three 12" flats or four 9" flats without rib straddling! The waffled base provides almost triple the bonding power of a smooth-bottom guard in this size category. Starter points are provided for mechanical fastening. Professional ATI test results show the SnoBlox Deuce held up to 3,456 pounds when screw mounted and 1,379 pounds when adhesive mounted using the SB-190. All tests were performed simulating realistic snow loading conditions applied to the face of the guard.

Placement in isolated areas such as chimneys, doorways, vents and partial roof sections is **NOT** recommended. Always get a custom snow guard spacing layout from www.spacingtool.com before installing snow guards. Proper snow guard placement evenly distributes the snow load across the structure and snow retention system.

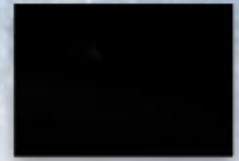
Available in clear and colors shown.



Sandstone



Red



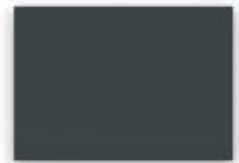
Black



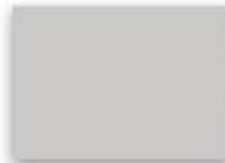
White



Blue



Dark Gray



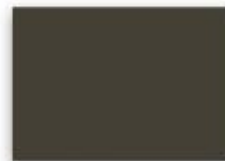
Light Gray



Hunter Green



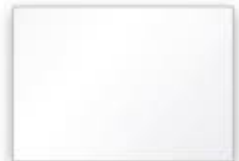
Patina Green



Medium Bronze



Copper

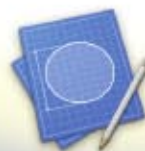


Clear

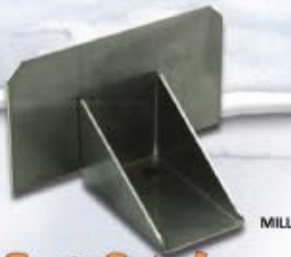
Colors are approximate. Slight variations in color are not cause for rejection.



Specification and
Product Cut Sheets
Available **Online** at
www.SnoBlox-Snojax.com



Get instant Snow
Guard Spacing at
SpacingTool.com



SnowCatcher

The SnowCatcher is a metal snow guard that resembles the popular SnoBlox and SnoJax models. It is made from 16 gauge 304 grade stainless steel and is available in a variety of powder coated colors. The large, forward mounted 2.5" H x 4" W face provides a generous holding field, and the 1.5" wide base fits most 36" panels with 9" flats. Professional test results show the SnowCatcher held up to 1,866 pounds. The durable, steel construction does not get brittle like cheap, fabricated cast guards. This guard includes a 1/16" thick adhered V742 CCF PVC foam sealer pad.



ColorBar

This aesthetically pleasing bar is the industry's strongest aluminum rail system. Super durable color-matched TGIC Polyester finish is on all components. This product is economical, reliable and utilizes the industry's only color-matched, stainless steel clamp. ColorBar is manufactured by Action Manufacturing, LLC. and exclusively marketed by IceBlox, Inc.

RAL 3015	RAL 3020	ROSSO 305	RED BARON
RAL 3011	RAL 3003	RAL 3004	RAL 3005
RAL 3007	RAL 3009	RAL 8015	RAL 2010
SAFETY ORANGE	RAL 1033	RAL 1003	SAFETY YELLOW
AG GREEN	RAL 6029	RAL 6002	HUNTER GREEN
RAL 6028	RAL 6005	RAL 6020	RAL 6012
RAL 6009	RAL 6015	RAL 5020	RAL 5021
RAL 5011	RAL 5003	RAL 5000	RAL 5010
RAL 5005	RAL 5017	RAL 5015	RAL 5007
RAL 5014	RAL 9001	UNICREAM	ALMOND
RAL 1015	CAMEL	RAL 7032	CHAMPAGNE 304
RAL 1019	RAL 8002	ROMAN BRONZE	RAL 8019
ICEBERG WHITE	SKY WHITE	RAL 9002	RAL 7035
LOWES GRAY	ANODIZED SILVER	CHROME	CHROME W/ CLEAR
STARDUST SILVER II	RAL 7023	PBZ GRAY	RAL 7039
RAL 7043	FLINT TEXTURE	STORM GRAY	MINERAL BRONZE
RAL 7022	RAL 7016	RAL 7021	SUPER SATIN BLACK
BIKE BLACK <small>(Super Hi-Gloss)</small>	FLEX BLACK	BLACK 51	TUSCAN BLACK
FL. BLACK TEXTURE	TUXEDO BLACK	ARGENTO 308	COPPER METALLIC
SILVER MINE	SILVER VEIN	GOLD VEIN	COPPER VEIN
	COPPER HYBRID	RUST	

Colors are approximate. Slight variations in color are not cause for rejection.